

EuroMedix

CHARM_{cm}

EuroMedix, trailblazer in POC lipid testing since 1994

The EuroMedix CHARM *cm* analyser is state-of-the-art technology for advanced point-of-care lipid testing. Achieving results previously only possible with lab-based systems, the unique EuroMedix CHARM *cm* measures direct LDL cholesterol and lipoprotein(a) at the point of care.



The CHARM Concept

Cardiometabolic Health & Advanced Risk Management



Direct non-fasting
LDL cholesterol

The Friedewald equation tends to underestimate LDL-C most when accuracy is most crucial ⁽¹⁾

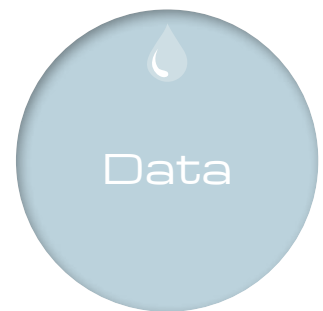
⁽¹⁾Journal of the American College of Cardiology, 2013



Lipoprotein(a)

Lp(a), a priority for reducing cardiovascular risk, beyond that associated with LDL-C. ⁽²⁾

⁽²⁾ European Atherosclerosis Society, 2010



Real time
data collection

- Physician's office
- Health workers' network
- Public health & epidemiology

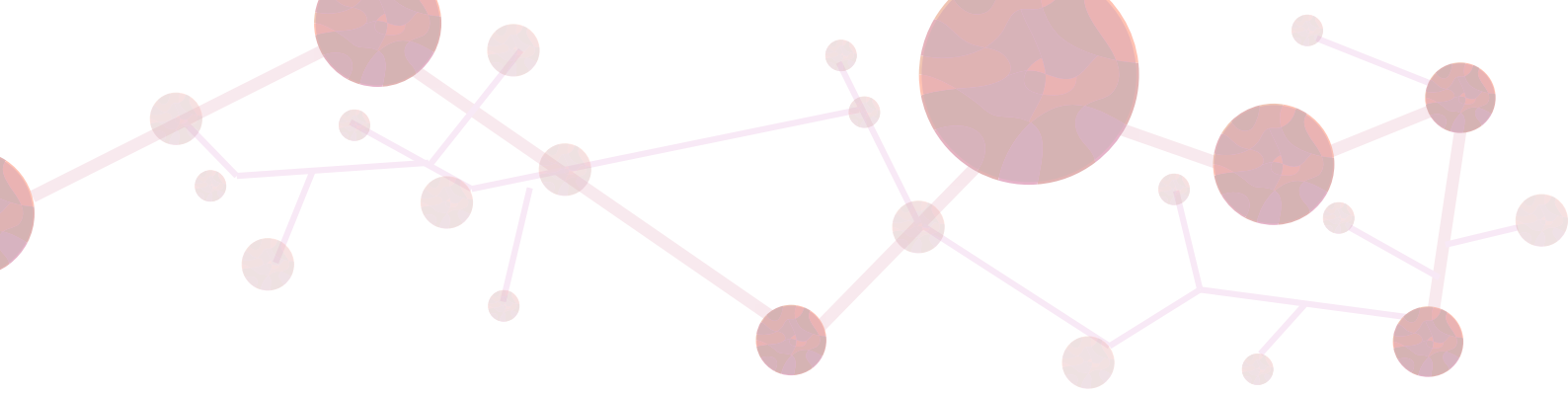


Direct non-fasting LDL cholesterol test

It has been shown that most of the cholesterol stored in atherosclerotic plaque originates from LDL. For this reason, LDL cholesterol concentration is considered the most important single clinical predictor of coronary atherosclerosis.

The Friedewald equation tends to underestimate LDL-C most when accuracy is most crucial. Especially if triglyceride levels are ≥ 150 mg/dl, Friedewald estimation commonly classifies LDL-C as < 70 mg/dl despite directly measured levels ≥ 70 mg/dl, and therefore additional evaluation is warranted in high-risk patients. ⁽¹⁾

⁽¹⁾Journal of the American College of Cardiology, Volume 62, Issue 8, 20 August 2013, Pages 732–739
Friedewald-Estimated Versus Directly Measured Low-Density Lipoprotein Cholesterol and Treatment Implications, Seth S. Martin, MD*, , Michael J. Blaha, MD*, Mohamed B. Elshazly, MD*, Eliot A. Brinton, MD†, Peter P. Toth, MD, PhD‡, §, John W. McEvoy, MB BCh*, Parag H. Joshi, MD*, Krishnaji R. Kulkarni, PhD†, Patrick D. Mize, PhD†, Peter O. Kwiterovich, MD*, Andrew P. DeFilippis, MD*, ¶, Roger S. Blumenthal, MD*, Steven R. Jones, MD*



Lipoprotein(a), a low density lipoprotein-like particle

Earlier studies have shown that levels above 20-30mg/dl present in approximately 25% of the population are associated with an increased risk of coronary heart disease. Lipoprotein(a) concentrations are a risk indicator for cardiovascular diseases, especially when accompanied by elevated serum LDL or APO B levels.

A convenient and reliable method for quantifying Lp(a) in serum or plasma is an important tool for identifying individuals at risk of developing arteriosclerosis.

According to a statement from the EAS:

... the evidence clearly supports Lp(a) as a priority for reducing cardiovascular risk, beyond that associated with LDL-C... ⁽²⁾

⁽²⁾ EAS, European Atherosclerosis Society, 2010

Real time data collection

The future is built-in:

e-Health at your fingertips via app and Internet

Multiple data collection options:

- Data accessibility limited to the physician's office
- Data accessible to the health workers' network
- Data collection for public health & epidemiological studies

The EuroMedix CHARM *cm* is operated and controlled using an intuitive Android application that can be linked to important eHealth and mHealth networks.

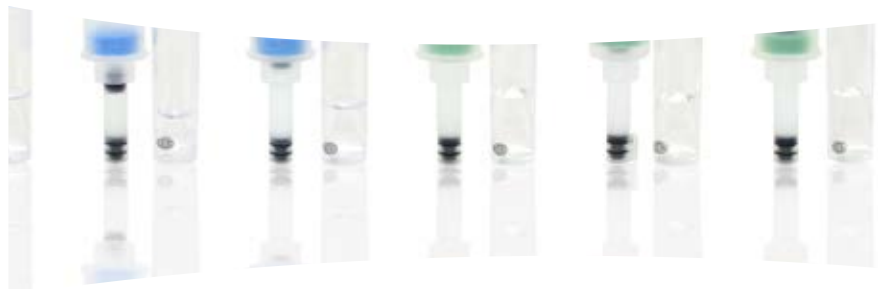


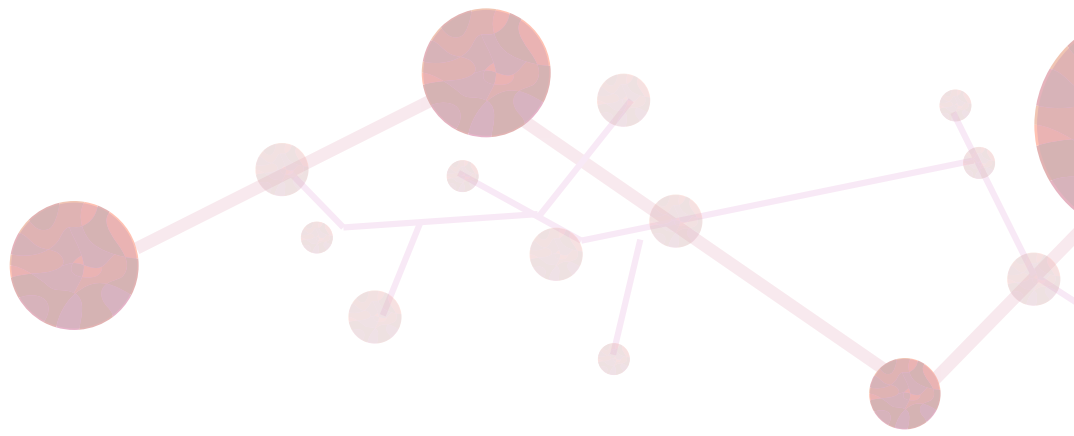
Innovation in POC

The EuroMedix CHARM *cm* is a compact POC testing system with industry-leading data precision and accuracy: lab quality at your fingertips

The EuroMedix CHARM *cm* is unique and trendsetting POC lipid testing technology

Mobile, flexible, immediate results at the point of care





Test portfolio

Parameter	Sample material	Sample volume	Assay range	Precision within run
Direct LDL cholesterol	Serum or EDTA plasma	10 μ l	10 - 300 mg/dl	CV < 1.5% (at 115 mg/dl)
Lipoprotein(a)	Serum or EDTA plasma	10 μ l	10 - 110 mg/dl	CV < 2.5% (at 50 mg/dl)



CHARM CONCEPT

Cardiometabolic Health & Advanced Risk Management

EuroMedix.com

Innovating to
improve your health

Let's get in touch ...

EuroMedix POC nv/sa
Vaartdijk 59, B - 3018 Leuven
+32 (0)16-310410

EuroMedix Health am Dom GmbH
Theodor-Heuss-Ring 23, D - 50668 Köln
+49 (0)221-12607410

EuroMedix France SAS
128 rue La Boétie, F - 75008 Paris
+33 (0)1-85640388

EuroMedix Health Care Solutions AG
Gewerbstrasse 11, CH - 6330 Cham (Zug)
+41 (0)41-7491021

Tele-Network Europe (landlines only)
00800 - 16310410

